

# Contract Services

*A quick guide*

**STEVE  
VICK**  
INTERNATIONAL



[stevevick.com](http://stevevick.com) | 01225 864 864



# Stub End Solutions



## ESEAL & ESEAL 2

*The ESEAL & ESEAL 2 technique is used for the safe, remote, 100% abandonment of unwanted sections of gas main, including the last transition joint.*

For more information [scan here](#) ▶



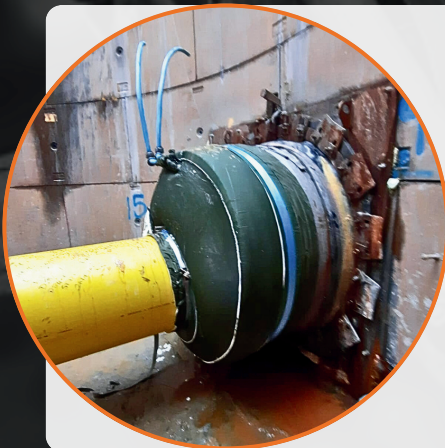
## FBOS

*Foambag Operation on Stubs (FBOS) is a method of replacing short lengths of T1 stubs/stranded mains for diameters of 4" up to 8" including one-way fed in sensitive locations or where access onto the main is restricted.*

For more information [scan here](#) ▶



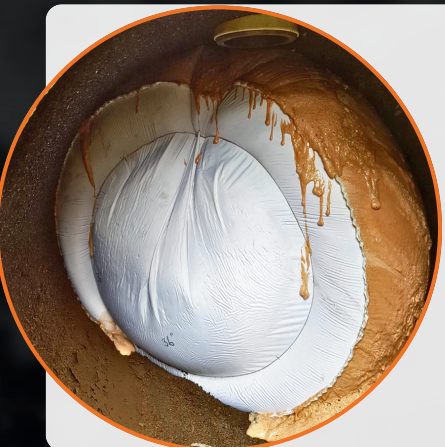
# Filling Voids & Annular Spaces



## Grout Filling

*Grout filling offers a low-cost solution where there is a need to seal off large diameter utility mains, either inserted or abandoned.*

For more information [scan here](#) ▶



## Foam Filling

*Steve Vick International patented foam can provide a low-cost method of filling a wide variety of unwanted voids.*

For more information [scan here](#) ▶



# Pipe Cutting



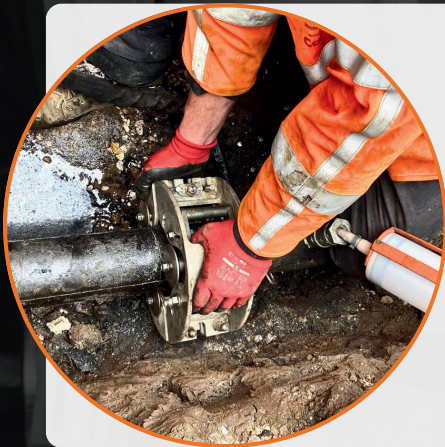
## Rapid Window Cutter

*Compact, hand-held cutter for cutting windows in live or dead inserted mains, without risk of damaging inserted PE.*

Suitable for all sizes of steel and ductile mains up to 13mm in depth.

Fast cutting times compared with traditional methods.

For more information [scan here](#) ▶



## Rapid Rotary Cutter

*Circumferential Cutter for steel, ductile & cast iron mains up to 200mm/8" in diameter.*

Quick cutting time — approx 2 mins per cut on 4"/100mm ductile iron and 4 mins per cut on 4"/100mm steel.

For more information [scan here](#) ▶



## Keel Cutter

*Circumferential cutting and beveling machine which cuts steel, cast iron, ductile iron and plastic up to 1600mm in diameter.*

Fast cutting time — typically 8 minutes to cut a 300mm diameter cast iron pipe. Available to purchase, hire or as a contract service.

For more information [scan here](#) ▶



## PE Pipe Cutter

*A circumferential cutter, designed to cut large diameter PE pipe in a single rotation, quickly and safely.*

Extremely quick cutting time — approximately 3 minutes to cut a 630mm diameter PE pipe

For more information [scan here](#) ▶



# Filling Voids & Annular Spaces

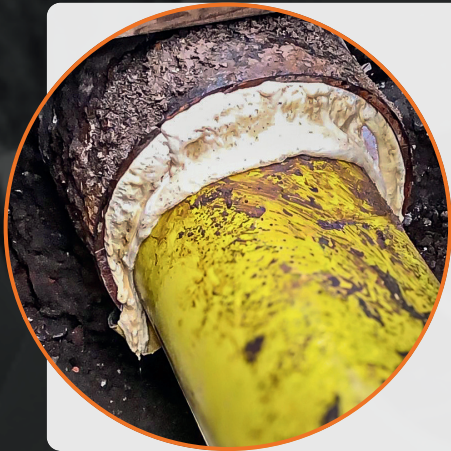


## FOAMCAP™

*FOAMCAP™ is a lightweight and low-cost alternative to metal caps used to seal off abandoned dead gas mains. They are simple to fit and may be used on uneven or badly corroded mains.*



For more information [scan here](#) ▶



## Dead Annular Sealing

*Using approved SVI ENDSEALS™ or Annular sealing bags customers are able to stop an annulus from residual gas or contaminants in the redundant main from entering the ground.*



For more information [scan here](#) ▶



## Overbuilds

*SVI have developed an annular gap sealing technique for mains which lie underneath a private property, for example, under a garage or under a conservatory*



For more information [scan here](#) ▶

For further information, prices or technical support, contact us today:

**01225 864 864**  
**sales@stevevick.com**

All available  
for **CONTRACT**  
**SERVICE**

For our full range of products visit: **stevevick.com**

Steve Vick International reserve the right to amend specifications without prior notice. Steve Vick International Ltd 2025. All Rights Reserved.

# Internal & External Pipe Systems



## Live Riser Transfer

Available for use within the UK gas industry on 1" to 6" diameter low pressure services, this technique allows a gas riser within a building to be partly renewed or transferred to a new main without first decommissioning it.

For more information [scan here](#) ▶



## PIV - Pipe Isolation Valve

Steve Vick International have worked with Cadent Gas to design a way of successfully installing a new PIV, for 2" steel or below, under 'live' conditions using Steve Vick Live Gas Service Isolation and Live Service Transfer.

For more information [scan here](#) ▶



## Live Service Transfer

Live Service Transfer is a technique which allows a gas service to be partly re-laid and/or transferred to a new main without disrupting the customer's gas supply.

For more information [scan here](#) ▶



## Multiple Occupancy Buildings

Our Contract Service team have over 35 years' experience working on solutions for multiple occupancy buildings (MOBS).

For more information [scan here](#) ▶



# Flowstopping



## FOAMBAG™

*FOAMBAG™ flowstopping system involves the injection of expanding foam into a fabric bag which is placed in the pipe. The bag holds the liquid foam in place whilst it expands, providing a gas tight seal at full expansion.*

For more information [scan here](#) ▶



## ENDSEALS™

*ENDSEALS™ are used to stop gas tracking back along the annular space of inserted gas mains. This method avoids spending unnecessary time and money excavating.*

For more information [scan here](#) ▶



## Large Diameter Live Mains Insertion

*By using a gland box, the old main is kept live throughout the insertion process and the new PE is gassed up to maintain gas supplies to customers.*

For more information [scan here](#) ▶



**EMERGENCY REPAIRS  
AVAILABLE**

**We offer a rapid  
call out service.**

**01225 864 864**

**24 hours a day,  
7 days a week**