

# Mini Cutter

*The Mini Cutter is designed to meet the demands of modern utility services, particularly in the redevelopment of residential and commercial properties.*

When customers request meter relocation, altering service pipework becomes necessary. The Mini Cutter provides a precise, safe, and efficient method for accessing polyethylene (PE) pipes encased within metallic services. Unlike traditional methods where the alteration needs to start at a point where the PE pipe is not encased, such as at the parent main, the Mini Cutter allows operators to safely cut windows in steel pipes, directly accessing the PE pipes without compromising safety or efficiency.

## Features and Benefits

- **Lightweight and Ergonomic Design:**

*Feature: Weighing only 8.8kg, the Mini Cutter*

*is easily managed by a single operator. The unit is equipped with two prominent handles designed for comfortable handling, featuring rubberised grips that accommodate a range of hand sizes.*

*Benefit: The ergonomic design minimises physical strain and fatigue, ensuring that operators can work efficiently and safely, even during extended periods of use.*

- **Precision Cutting Mechanism:**

*Feature: The Mini Cutter includes robust control systems with safety features that prevent unexpected start-up. The pneumatic motor is powered through a dual-valve system, requiring deliberate activation to operate.*

*Benefit: Operators are protected from potential hazards, with the Mini Cutter design ensuring that the tool can only be activated intentionally, thereby preventing accidents.*

- **Comprehensive Safety Features:**

*Feature: The Mini Cutter includes fixed guards to protect operators from the cutting blade.*

*Benefit: Ensures maximum operator safety.*

- **Efficient and Easy to Use:**

*Feature: The Mini Cutter is designed for ease of use, allowing a single operator to perform precise cuts with minimal physical effort. The machine's low-profile design requires only a small excavation, making it suitable for various job site conditions.*

*Benefit: Increases productivity by reducing the time and manpower needed for pipe alteration tasks, while the compact design minimises disruption to surrounding areas.*

- **Durable and Long-Lasting Construction:**

*Feature: The Mini Cutter is built with high-quality components, including a specialist steel cutting disc and a robust pneumatic motor with a lubrication unit to prevent freezing and extend operational life.*

*Benefit: The tool offers long-term reliability, reducing maintenance costs and ensuring consistent performance over time.*

- **Flexibility:**

*Feature: The Mini Cutter is equipped with adjustable guide wheels and interchangeable housing/cages, available in three sizes to fit 4", 6", and 8" diameter host mains.*

*Benefit: This design provides a stable base for the machine, ensuring precise operation across different pipe sizes. The flexibility to adjust and adapt on-site reduces setup time and ensures consistent performance.*



GAS



WATER



NUCLEAR



CONTRACT SERVICES



SMARTESTER



HIRE



FUTURE ENERGY

## Technical specifications

**Required clearance** For a 300mm cut there needs to be 150mm at each end - 600mm in total length. 100mm clearance on the bottom and 150mm both sides of the pipe.

**Minimum pipe diameter** 3/4" pipe and 2" pipe max

**Maximum wall thickness** 5.5mm

**Typical cutting time** 3min/3:30

**Width** 150mm/200mm

**Height** 265mm

**Length** 520mm

**Power source** Pneumatic

### Weight

**Mini Cutter without hoses** 8.8kg

**Mini Cutter with hoses** 10.3kg

**Lubricator Unit** 14kg

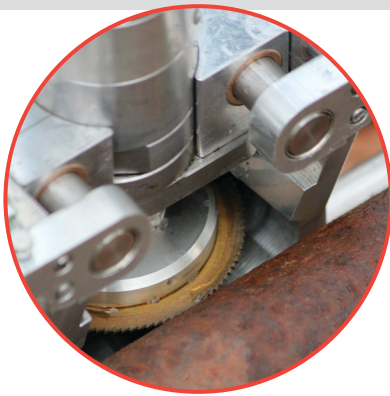
**Complete Mini Cutter Kit & Case** 40kg

### Functions

- Perform a linear cut on varying steel service pipe sizes ranging from 3/4" to 2".
- Indexing depth control allowing 0.5mm depth of cut to prevent damage to the inserted PE.
- Quick release nut allows the motor carriage to be freely moved and adjusted.
- Ease of use - one man operation.
- Low profile - requiring a small excavation.

### Approvals and Standards

- CE marked - Standards that apply:
  - Directive 2006/42/EC
  - Directive of the European Parliament and of the Council on 'Machinery'. As transposed into UK law by the 'Supply of Machinery Regulations - SI 2011-2157 and SI 2008-1597.
  - SI 2011 No. 2157 HEALTH & SAFETY- The Supply of Machinery (Safety) Regulations 2011.
  - Amendment to SI 2008-1597
  - SI 2008 No. 1597 HEALTH & SAFETY- The Supply of Machinery (Safety) Regulations 2008



## About Steve Vick International

**We are experts in innovative engineering for trenchless renovation and decommissioning of pipes worldwide.**

Since our foundation in 1981, we have been dedicated to delivering cost-saving solutions for damaged, redundant or outdated underground pipe work. We are at the forefront in developing products and techniques across gas, water, nuclear and contract service sectors on a worldwide basis.

We are proud of our reputation for innovative product development, strong technical support and after sales care.

For more information on any of the products and services featured here, please contact: [info@stevevick.com](mailto:info@stevevick.com)



Steve Vick International Ltd  
UK HQ: Treewood Industrial Estate  
Bradford on Avon, Wiltshire BA15 2AU

+44 (0) 1225 864 864  
[stevevick.com](http://stevevick.com)

