

Service Taper Tool

A safe and easy method of chamfering 20mm and 25mm PE services prior to insertion.

When dead inserting gas services from outside the premises, it is customary to chamfer the leading edge of the PE pipe to aid speedy insertion. Using a knife or hacksaw can lead to injuries but now there is a safe alternative with our Service Taper Tool; two models are now available to suit 20mm and 25mm PE.

The Service Taper Tool provides a safe and simple way of slicing a section off the PE allowing it to be pushed easily around even a tight bend into the building where it can be pulled through. Lengths in excess of 2 metres can be chamfered in less than 30 seconds.

The lightweight tool, comprises an aluminium metal shell with an internal by-metallic blade which cuts the PE pipe at a calculated angle. Replacement blades are available giving this robust tool a long life.

Method



1. Insert the PE pipe into the base of the Service Taper Tool.



2. Push through the required length you wish to chamfer.

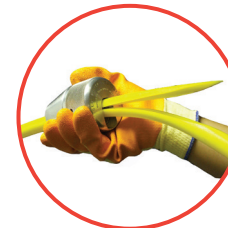
3. Once the correct length is inserted, locate the PE pipe against the blade.



4. Pull the pipe towards you...



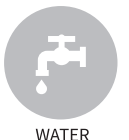
5. ...until the required length is chamfered.



6. You will then be left with the chamfered PE service ready to insert.



GAS



WATER



NUCLEAR



CONTRACT SERVICES



SMARTESTER

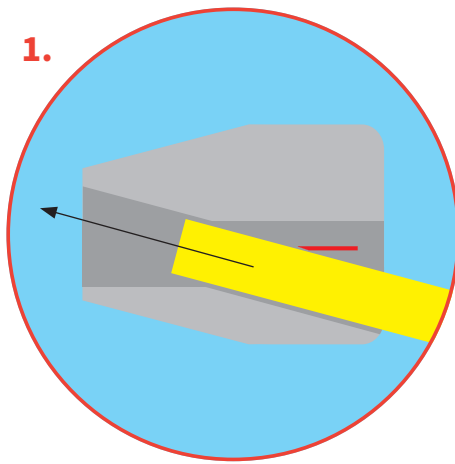


HIRE



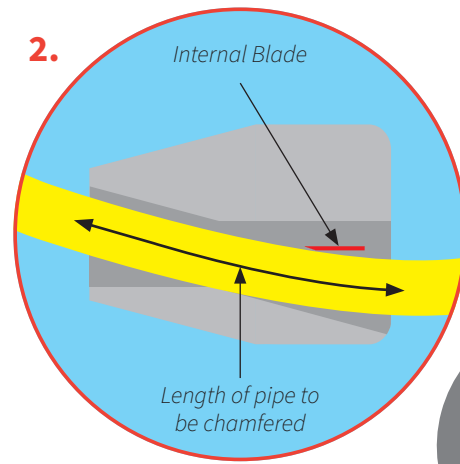
FUTURE ENERGY

The SAFE way to chamfer 20mm and 25mm services



1.

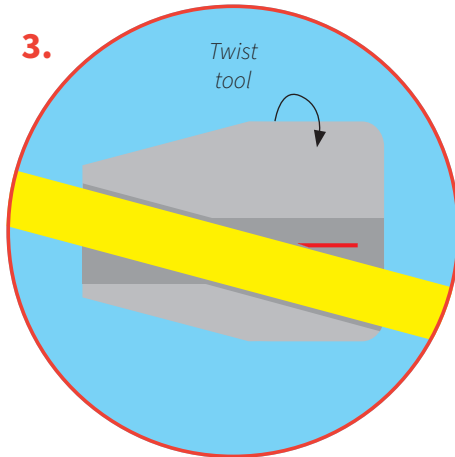
The Pipe will enter the base of the Service Taper Tool sliding past the internal blade.



2.

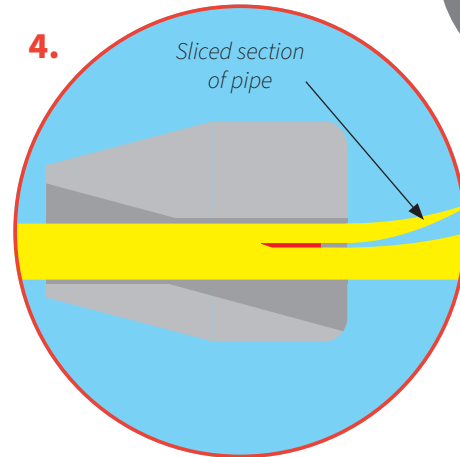
Push through the required amount of pipe you wish to chamfer.

Lengths in excess of 2m can be chamfered in less than 30 seconds SAFELY!



3.

Twist the Service Taper Tool in a downwards action creating contact with the pipe causing the blade to bite.



4.

The Service Taper Tool can now be pulled off slicing the required length of the pipe during travel.

Other products available for Dead Service Insertion



Fullseal™ is an annular sealant filling the gap between newly inserted service pipe and the existing steel pipe.

Its benefits include:

- Low Cost
- Environmentally friendly-inert material
- Adaptable-PE can be removed if required
- Clean-spills can be washed off with water
- Ready to use-no mixing or preparation required

About Steve Vick International

We are experts in innovative engineering for trenchless renovation and decommissioning of pipes worldwide.

Since our foundation in 1981, we have been dedicated to delivering cost-saving solutions for damaged, redundant or outdated underground pipe work. We are at the forefront in developing products and techniques across gas, water, nuclear and contract service sectors on a worldwide basis.

We are proud of our reputation for innovative product development, strong technical support and after sales care.

For more information on any of the products and services featured here, please contact: info@stevevick.com



Steve Vick International Ltd
UK HQ: Treewood Industrial Estate
Bradford on Avon, Wiltshire BA15 2AU

+44 (0) 1225 864 864
stevevick.com

