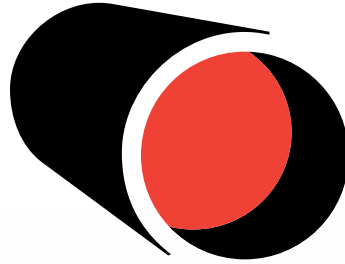


# STEVE VICK

INTERNATIONAL



GAS



WATER



NUCLEAR



CONTRACT  
SERVICES

Innovative engineering for trenchless  
renovation and decommissioning  
of pipes worldwide



**Steve Vick International (SVI) is dedicated to delivering cost-saving solutions for damaged, redundant or outdated underground pipework.**

Since its foundation in 1981, SVI has been at the forefront in developing products and techniques for the repair, renovation and decommissioning of pipes. Whilst our main focus is on the gas industry, we are steadily increasing our activities in the water, nuclear and contract service sectors on a worldwide basis.

In 2014 the company moved to a newly renovated building in the historic town of Bradford-on-Avon, Wiltshire. Here we have almost 2,000 square metres with dedicated areas for production, warehousing, product development and administration.

We are proud of our reputation for innovative product development, strong technical support and after sales care.



#### **GAS**

In the UK we are major suppliers to all the gas distribution networks. Many of the techniques we have pioneered have become accepted practice in the industry and our resin foam sealant products and associated equipment are key to many of the cost-saving renovation methods used.



#### **WATER**

In the water industry we provide innovative pipe handling equipment such as pipe coil trailers, pipe insertion machines and pipe cutters as well as products used to seal off abandoned pipes.



#### **NUCLEAR**

Of increasing importance to the business is our work in the nuclear decommissioning field where our team of experts develop and execute solutions to the problems of abandoning disused pipework and filling all types of voids in challenging situations.



#### **CONTRACT SERVICES**

Whilst we provide sealant systems in kit form for customers to carry out their own renovation or decommissioning projects, our Contract Service is a vital part of the business. Highly qualified teams carry out more specialised operations around the UK and overseas.

---

### **SVI also provide the following service:**



#### **INNOVATION**

At SVI we are able to collaborate with our clients to develop new products and techniques that solve the problems they are experiencing in the field.



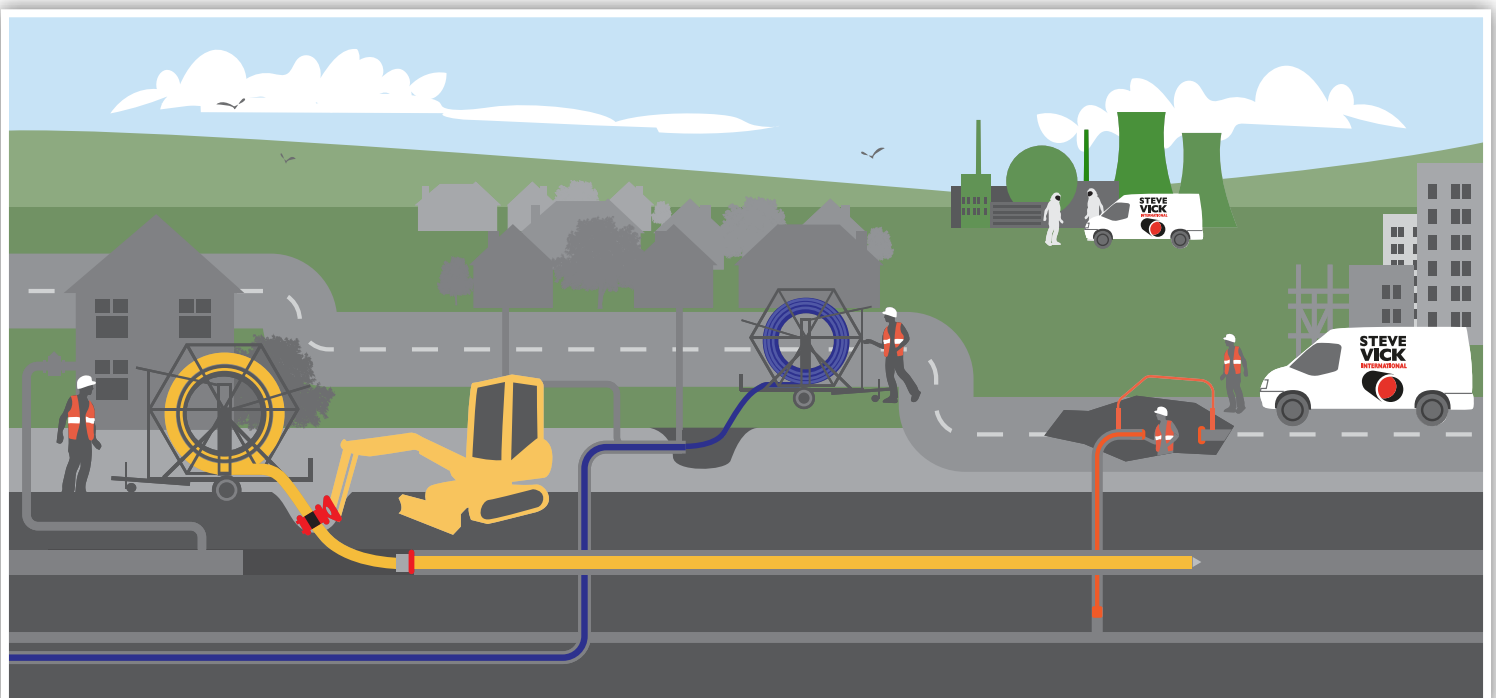
#### **HIRE**

Customers not wishing to purchase products can benefit from our established hire programme. Products such as Pipe Handlers, Pipe Coil Trailers and Pipe Cutters can be leased on a long or short term basis.



#### **TRAINING**

We offer both formal and informal training on all techniques and products. Our comprehensive Live Mains Insertion course is particularly popular and comprises both classroom sessions and onsite training.



# GAS MAINS AND SERVICE RENEWAL



GAS



WATER



NUCLEAR



CONTRACT  
SERVICES

## Live Gas Mains Insertion

During the 1980's, SVI pioneered a gas mains replacement technique called Live Gas Mains Insertion.

Live Mains Insertion is similar to normal insertion of new PE pipe into an old low pressure cast iron main, with one major benefit: by using a special gland box, the old main is kept live throughout the insertion process and the new PE is gassed up to maintain gas supply to customers.

Once insertion is complete, the main is still kept live to supply customers via the annular space until it is operationally convenient to transfer the services to the new PE main.

We supply all hardware, application equipment and consumables required to carry out Live Mains Insertion. Training and on-site technical assistance are available.

## Dead Service Insertion

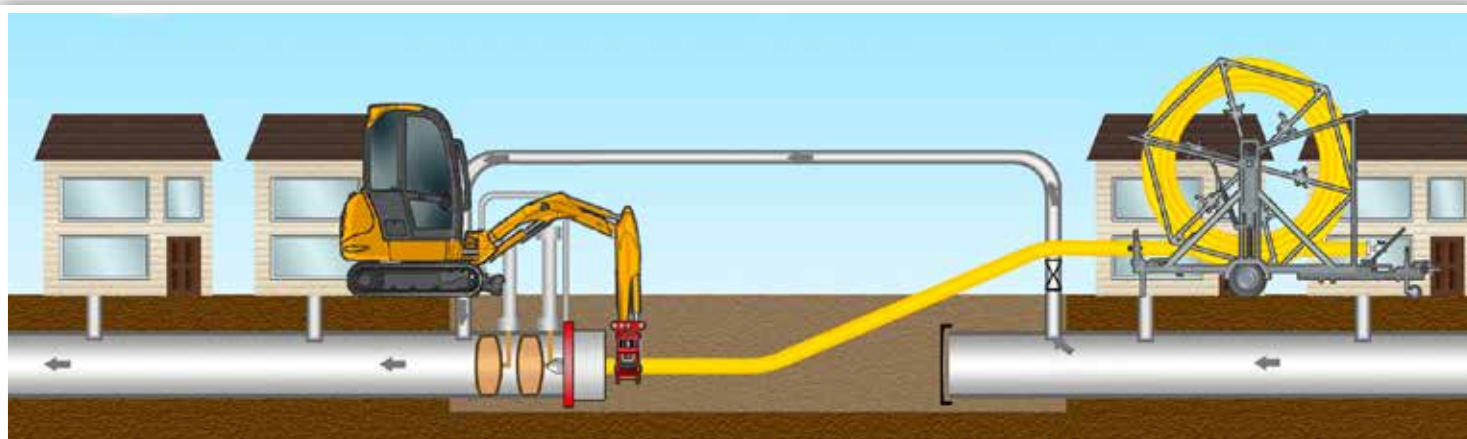
FULLSEAL™ is a low-cost annular sealant for use with Dead Service Insertion. An inert sealant, FULLSEAL™ contains zero harmful chemicals and can easily be cleaned should spilling occur.

Due to its thixotropic properties, FULLSEAL™ never fully sets so multiple cartridges can be injected and PE can be easily removed in the case of third party damage.

We also supply a wide range of sealants, application equipment and fabric moulds for a variety of applications including annual sealing and pipe abandonment.



*FULLSEAL™ kit with applicator gun*



*In the Live Gas Mains Insertion technique (up to 180mm Ø), the coil of PE is gassed up prior to being inserted via the gland*

## Live Service Insertion

Following on from Live Mains Insertion, we worked with Transco (now National Grid Gas) to develop a safe method of renewing live gas services with PE replacements.

Using our FOAMPACK™ sealant and specially designed application equipment, gas service pipes can be renewed quickly and safely without interrupting the mains supply. A small excavation outside the building to gain access to the service is all that is needed.

Both Live Gas Mains Insertion and Live Service Insertion have been adopted around Europe, the USA and the Far East.



*PE is inserted through valved gland assembly, replacing service under 'gas free' conditions*

## Rapid Service Isolation

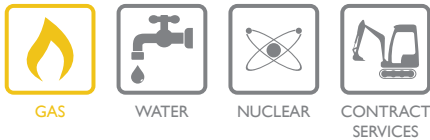
The Rapid Service Isolation technique was developed as a safe, fast alternative to the traditional method of cutting service pipes in live conditions. It allows an operative to isolate a metallic low pressure main under 'no gas' conditions to enable the service to be safely cut and subsequently dead inserted with a new PE pipe.

In addition to the above, we supply a wide range of ancillary equipment including a Mini Purge Ejector and tools for cutting, tapering and chamfering PE service pipe.



*Rapid Service Isolator system injecting sealant into live service prior to cutting,*

# FLOWSTOPPING AND GAS SERVICE RENEWAL



## The FOAMBAG™ and FOAMSTOP™ Techniques

SVI's FOAMBAG™ system has become a gas industry standard method of flow stopping (or 'foaming off') sections of gas main to be abandoned and is approved for use on diameters from 3/4" up to 36".

In brief, a semi-porous fabric bag is inserted into the main and injected with resin foam which expands to form a permanent seal. The major benefit of using FOAMBAG™ is that far less pipe needs to be exposed resulting in smaller excavations and reduced reinstatement costs.

FOAMSTOP™ kits provide a 'no gas' method of service cut-off for 3/4" to 2" diameter pipes running at low pressure.

FOAMSTOP™ and FOAMBAG™ are available in kit form for customers to carry out their own operations on low pressure gas mains and services. For large diameters and medium pressure pipes, we offer our Contract Service.

## Foam-filled fabric seals and caps

We supply low-cost, lightweight fabric moulds which are filled on site with expanding resin foam providing an easy-fit means of sealing off large diameter inserted or abandoned gas mains. These are tailored to precise requirements to fit pipe diameters of 1200mm plus.

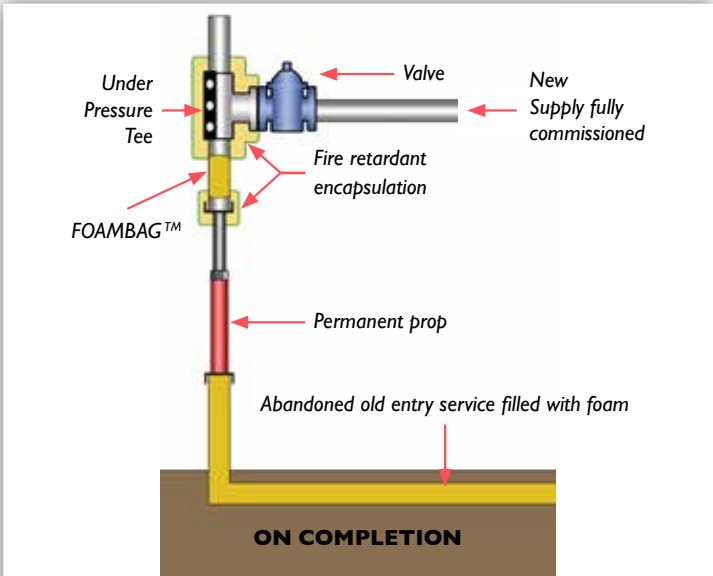
## Gas Main Stub End Abandonment

'Stub End Abandonment' enables practical, remote and safe final abandonment of unwanted sections of gas main, commonly referred to as Remote FOAMBAG™.

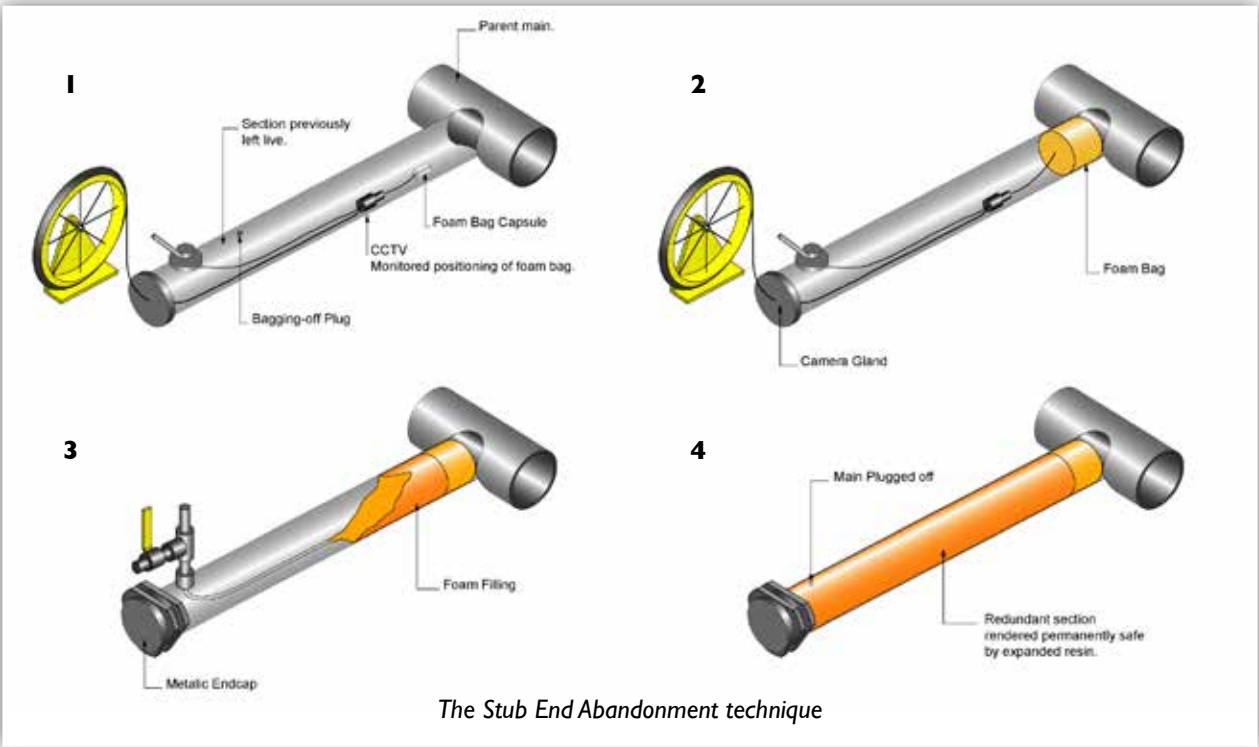
## Live Gas Riser and Service Transfer

Using the FOAMBAG™ flow stopping system with our under pressure drilling and associated equipment, allows a live gas riser within a building to be partly renewed or transferred to a new main without first decommissioning it. This method avoids the need to gain access to each dwelling in a block of flats and is approved for use on 1" to 6" risers.

Similarly, FOAMSTOP™ kits together with special under pressure tees are used for transferring services outside the building up to 2"/5cm.



Live Gas Riser Transfer allows a riser to be transferred to new main without first throwing it dead



The Stub End Abandonment technique



# PIPE HANDLING EQUIPMENT



GAS



WATER



NUCLEAR



CONTRACT  
SERVICES

## Pipe Coil Trailers

SVI has been manufacturing Pipe Coil Trailers since coiled pipe was introduced over 30 years ago. The key purpose of the design is to allow SAFE transport, storage and dispensing of coils of pipe from 40mm up to 180mm diameter. The newest addition to the range is the Hexi Trailer which holds 500m of up to 90mm PE, or 100m of 125mm.

Safety and ease of use are paramount in our trailer design. The coil is restrained within a steel cage to prevent the PE springing away and a central drum allows pipe to be pulled off or recoiled easily and quickly.



*The Hexi Trailer is the first trailer of its type capable of transporting and dispensing a 500 metre coil of 90mm PE*

Customers using the Hexi Trailer have reported reductions of up to 20% in pipe wastage due to the longer coils being used over several projects. One customer has also lowered their carbon footprint by 400 tonnes per year by reducing pit excavations.

## MACAW Pipe Cracker

This range of Pipe Cracking tools attach to an excavator for safe, effective cracking of redundant, even inserted, cast iron mains. This is a safe alternative to the traditional methods of using a sledge hammer or podger bar. Various models are available to crack pipes from 3" to 24" diameter.



*The Mini MACAW breaking a 6" cast iron main inserted with 75mm PE*

## Pipe Handlers

Our range of Pipe Handlers make the process of inserting PE pipe easier, safer and faster. Attached to a hydraulic excavator they are designed to grip the PE, position it in the excavation and insert pipe. The entire operation is controlled from the safety of the cab avoiding the need for operatives to handle the pipe or enter the trench.

Several models are available to handle pipe from 40mm right up to 900mm diameter and they are suitable for use with typical 1.5 to 8 tonne excavators.



*Pipe Handler sliplining 315mm PE into 12" host main*

## Pipe Cutters

SVI is the sole UK and European supplier of Keel Cutter machines which automatically track around the outer wall of pipes up to 1500mm diameter making circumferential cuts. The machines cut steel, cast iron, ductile iron, asbestos and plastic.



*The Rapid Window Cutter for inserted ductile iron mains*

The Rapid Rotary Cutter is designed to make circumferential cuts on ductile iron mains easy and very fast. In fact, it takes, typically, just two minutes to cut a 4" ductile main. It is ideal for circumferential cuts during live and dead insertion projects.

Our compact Rapid Window Cutter is used for the fast removal of window apertures from ductile mains to gain access to previously inserted PE.



GAS



WATER



NUCLEAR



CONTRACT SERVICES

## Pipe Coil Trailers

SVI Pipe Coil Trailers are used widely in the water sector for transporting and dispensing PE from 40mm up to 180mm diameter.

Customers using the Hexi Trailer have reported reductions of up to 20% in pipe wastage due to longer coils being used over several projects. One water company regularly uses the Hexi Trailer on pipebursting projects for dispensing large coils of 125mm diameter. They report cost reductions as it requires only one operative to dispense the pipe which pulls off the hydraulically raised central drum smoothly and easily.



*Hexi trailer with a 500m coil of 90mm PE.  
This model will also dispense 100m of 125mm*

## Pipe Handlers

Our range of Pipe Handlers attach to an excavator arm to manoeuvre PE pipe easily on site and to insert it into a host pipe when sliplining.

There are a number of models available, handling pipe diameters from 40mm right up to 900mm. Each model is capable of handling various diameters using shell inserts.



*630 Pipe Handler manoeuvring 500mm PE  
prior to sliplining*

## Pipe Cutting

Keel Cutters are used in the water sector for automatically cutting various types of pipe including asbestos, in the size range of 200mm to 1500mm diameter. With only 200mm clearance required, the excavation can be kept to a minimum and the Keel Cutter will work even in water if required. The machines are available to purchase or hire.



*Cutting a 48" cast iron pipe at a water treatment plant*

Our Contract Service teams regularly carry out projects in the water sector on pipes from 200mm to 1500mm diameter.

The Rapid Rotary Cutter is designed to make circumferential cuts on ductile iron mains easy and very fast. In fact, it takes, typically, just two minutes to cut a 4" ductile main.



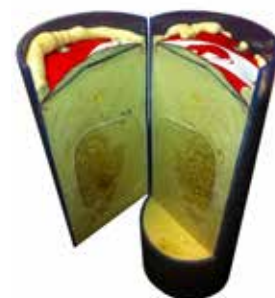
*Rapid Rotary Cutter*

Our compact Rapid Window Cutter is used for the fast removal of window apertures from ductile mains to gain access to a previously inserted plastic pipe.

## DRAINBLOCK™ and RATBLOCK™ Bags

Based on our well proven FOAMBAG™ system, DRAINBLOCK™ is a technique for remotely sealing off disused drain and sewer laterals. The DRAINBLOCK™ is positioned remotely with the aid of a CCTV camera and when cured it prevents the ingress/egress of water, stops the passage of odour and discourages the movement of vermin.

Where the priority is the preclusion of rats, we have a product called RATBLOCK™.



*RATBLOCK FOAMBAG™*



# NUCLEAR DECOMMISSIONING



GAS



WATER



NUCLEAR



CONTRACT  
SERVICES

SVI has been carrying out projects in the nuclear decommissioning sector for more than 20 years. Our products and services involve permanently sealing off, decommissioning and diverting all types of pipework, ducts and voids in a wide variety of situations including underground or underwater.

We are able to work with customers to devise solutions for specific problems. Many of the techniques employed are based on our foam sealant technology which can be carried out from remote locations minimising exposure times. We are able to deal with vertical, horizontal and tapered pipes, including steel, asbestos, concrete and plastic, with diameters up to and even above 1000mm.



*BEPO storage block at Harwell filled with SVI foam sealant*



*35mm bespoke FOAMBAGs™ installed at the BEPO storage block, Harwell*

Bespoke FOAMBAG™ kits are available including 'all-in-one' kits which contain everything needed for a sealing operation.

We have worked in many of the UK's nuclear power

stations and The National Nuclear Laboratory has rated SVI cured foam as having an 8-10 year lifespan in an area with a background radiation level of 7-9Sv.



*A FOAMBAG™ before and after expansion of the PU foam*

## CONTRACT SERVICES

SVI Contract Service teams provide on-site solutions to a wide variety of pipe renewal and decommissioning problems. Whilst a significant proportion of our work involves the flow stopping and abandonment of gas mains and services, we also work in the water, nuclear and civil engineering sectors, sealing off all types of pipes, ducts and unwanted voids.

For example, our sealant systems are used for closing off annular spaces in sleeved pipework at road, river and rail crossings and for filling larger voids such as redundant underground storage tanks and dangerous cellar spaces.



*Duct sealing operation carried out on a 10" steel main, under a railway track*



GAS



WATER



NUCLEAR



CONTRACT  
SERVICES

### Pipe Cutting

We offer a pipe cutting service on all types of material including cast iron, ductile iron, steel, asbestos and plastic up to diameters of 1500mm.

For circumferential cuts, depending on the project, our Contract Service teams use either a hydraulically powered Keel Cutter or the Rapid Rotary Cutter. The latter takes just two minutes to cut a 100mm ductile iron pipe. For cutting an aperture in a ductile iron main, in order to expose a previously inserted pipe, we use our own Rapid Window Cutter.

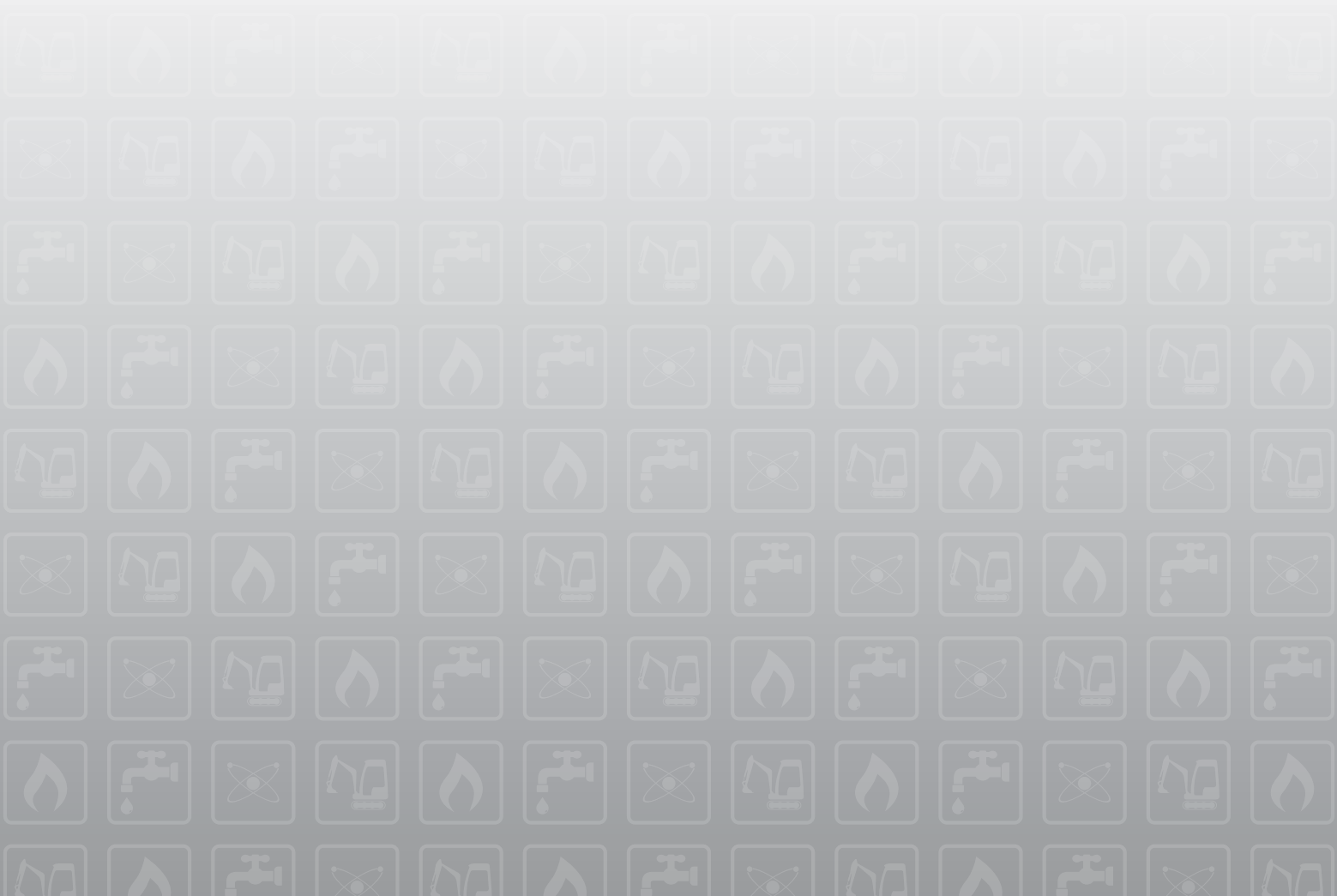
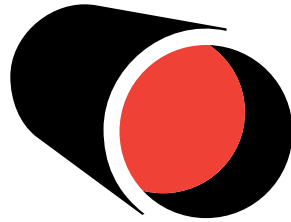


*Windows can be cut in a matter of minutes, even on inserted mains*

Strategically based around the UK in Tyneside, Manchester, the West Midlands, London and Wiltshire, our highly experienced teams are able to respond quickly to customers' needs. For emergency repairs we offer a rapid call-out service 24 hours a day, 7 days a week within mainland UK.

# STEVE VICK

INTERNATIONAL



📧 [info@stevevick.com](mailto:info@stevevick.com)    ☎ +44 (0) 1225 864 864    🌐 [stevevick.com](http://stevevick.com)

Steve Vick International Ltd. Treewood Industrial Estate, Bradford on Avon, Wiltshire, BA15 2AU

