

SERVICE TAPER TOOL

A safe and easy method of chamfering PE services prior to insertion

When dead inserting gas services from outside the premises, it is customary to chamfer the leading edge of the PE pipe to aid speedy insertion. Using a knife or hacksaw can lead to injuries but now there is a safe alternative with our Service Taper Tool.

The Service Taper Tool provides a safe and simple way of slicing a section off the PE allowing it to be pushed easily around even a tight bend into the building where it can be pulled through. Lengths in excess of 2 metres can be chamfered in less than 30 seconds.

The lightweight tool, designed for handling 20mm PE, comprises an aluminium metal shell with an internal blade which cuts the PE pipe at a calculated angle. Replacement blades are available giving this robust tool a long life.



Service Taper Tool

METHOD



Insert the PE pipe into the base of the Service Taper Tool



Push through the required length you wish to chamfer



Once the correct length is inserted, locate the PE pipe against the blade



Pull the pipe towards you



...until the required length is chamfered

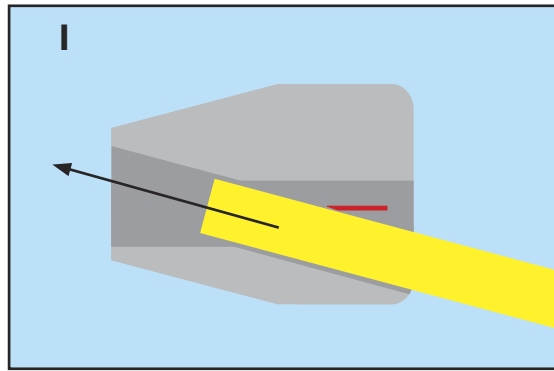


You will then be left with the chamfered PE service ready to insert

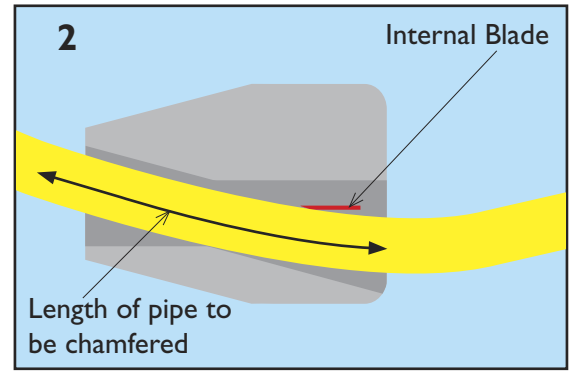
**The safe
way to
chamfer
services**

Lengths in excess of 2m can be chamfered in less than 30 seconds SAFELY!!

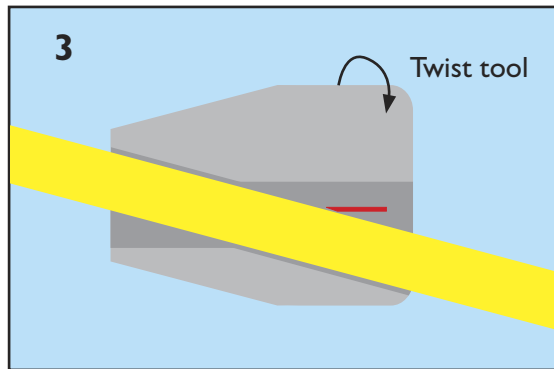
STAGE - BY - STAGE PROCESS



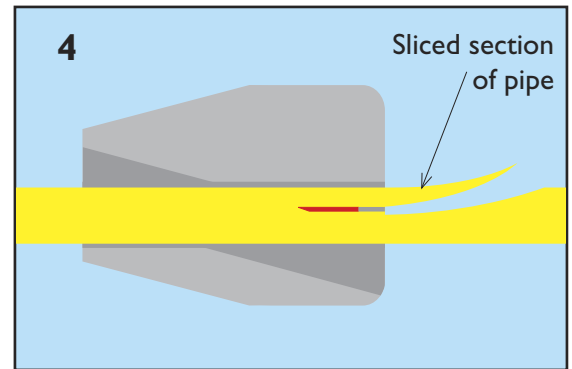
The Pipe will enter the base of the Service Taper Tool sliding past the internal blade



Push through the required amount of pipe you wish to chamfer



Twist the Service Taper Tool in a downwards action creating contact with the pipe causing the blade to bite



The Service Taper Tool can now be pulled off the pipe slicing the required length during travel

OTHER PRODUCTS AVAILABLE FOR DEAD SERVICE INSERTION

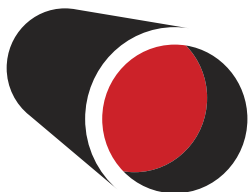
Fullseal™ is an annular sealant filling the gap between newly inserted service pipe and the existing steel pipe.

It's benefits include:

- Low Cost
- Environmentally friendly-inert material
- Adaptable-PE can be removed if required
- Clean-spills can be washed off with water
- Ready to use-no mixing or preparation required.



**STEVE
VICK
INTERNATIONAL**



Steve Vick International Ltd
Unit 4 Pinesway
Ivo Peters Road
Bath BA2 3QS
UK

Phone: +44 (0)1225 480488
Fax: +44 (0)1225 480484
Email: info@stevevick.com
www.stevevick.com

